

# PARTS LIST

## CAUTION

- The parts identified by the  $\triangle$  symbol are important for the safety . Whenever replacing these parts, be sure to use specified ones to secure the safety .
- The parts not indicated in this Parts List and those which are filled with lines --- in the Parts No. columns will not be supplied .
- P. W. Board Ass'y will not be supplied, but those which are filled with the Parts No. in the Parts No. columns will be supplied .

## ABBREVIATIONS OF RESISTORS, CAPACITORS AND TOLERANCES

RESISTORS		CAPACITORS	
C R	Carbon Resistor	C CAP.	Ceramic Capacitor
F R	Fusible Resistor	E CAP.	Electrolytic Capacitor
P R	Plate Resistor	M CAP.	Mylar Capacitor
V R	Variable Resistor	CH CAP.	Chip Capacitor
HV R	High Voltage Resistor	HV CAP.	High Voltage Capacitor
MF R	Metal Film Resistor	MF CAP.	Metalized Film Capacitor
MG R	Metal Glazed Resistor	MM CAP.	Metalized Mylar Capacitor
MP R	Metal Plate Resistor	MP CAP.	Metalized Polystyrol Capacitor
OM R	Metal Oxide Film Resistor	PP CAP.	Polypropylene Capacitor
CMF R	Coating Metal Film Resistor	PS CAP.	Polystyrol Capacitor
UNF R	Non-Flammable Resistor	TF CAP.	Thin Film Capacitor
CH V R	Chip Variable Resistor	MPP CAP.	Metalized Polypropylene Capacitor
CH MG R	Chip Metal Glazed Resistor	TAN. CAP.	Tantalum Capacitor
COMP. R	Composition Resistor	CH C CAP.	Chip Ceramic Capacitor
LPTC R	Linear Positive Temperature Coefficient Resistor	BP E CAP.	Bi-Polar Electrolytic Capacitor
		CH AL E CAP.	Chip Aluminum Electrolytic Capacitor
		CH AL BP CAP.	Chip Aluminum Bi-Polar Capacitor
		CH TAN. E CAP.	Chip Tantalum Electrolytic Capacitor
		CH AL BP E CAP.	Chip Tantalum Bi-Polar Electrolytic Capacitor

RESISTORS									
F	G	J	K	M	N	R	H	Z	P
±1%	±2%	±5%	±10%	±20%	±30%	+30% -10%	+50% -10%	+80% -20%	+100% 0%

## CONTENTS

USING P.W. BOARD & REMOTE CONTROL UNIT .....	43
EXPLODED VIEW PARTS LIST-I [AV-21DX3, AV-21DX3/A] .....	43
EXPLODED VIEW-I [AV-21DX3, AV-21DX3/A] .....	43
EXPLODED VIEW PARTS LIST-II [AV-21DX3, AV-21DX3/A] .....	44
EXPLODED VIEW-II [AV-21DX3, AV-21DX3/A] .....	45
EXPLODED VIEW PARTS LIST-III [AV-21FX3] .....	46
EXPLODED VIEW-III [AV-21FX3] .....	46
EXPLODED VIEW PARTS LIST-IV[AV-21FX3] .....	47
EXPLODED VIEW-IV [AV-21FX3] .....	48
 PRINTED WIRING BOARD PARTS LIST	
MAIN PW BOARD ASS'Y .....	49
 REMOTE CONTROL UNIT PARTS LIST .....	54
 PACKING / PACKING PARTS LIST [AV-21DX3, AV-21DX3/A] .....	55
 PACKING / PACKING PARTS LIST [AV-21FX3] .....	56

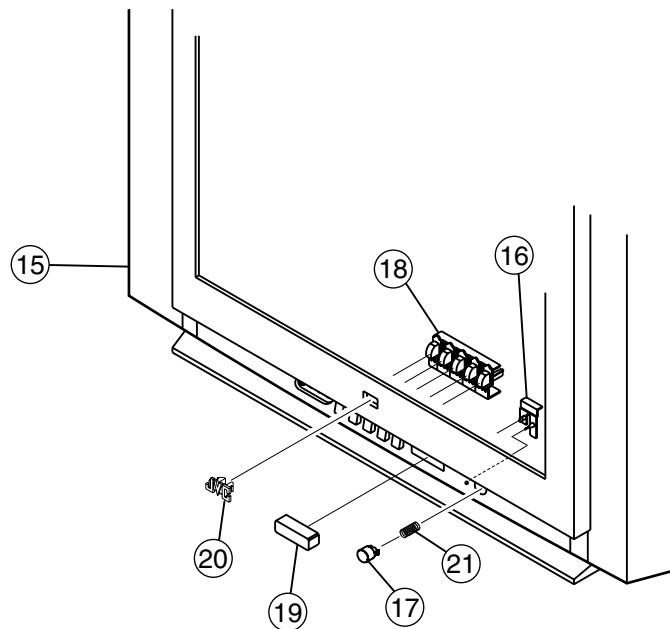
## USING P.W. BOARD & REMOTE CONTROL UNIT

P.W.B ASS'Y	Model	AV-21DX3	AV-21DX3/A	AV-21FX3
MAIN PWB (include CRT SOCKET PWB)		SCH-1089A-H2	←	←
REMOTE CONTROL UNIT		RM-C1014-1H	←	←

## EXPLODED VIEW PARTS LIST-I [AV-21DX3, AV-21DX3/A]

△ Ref.No.	Part No.	Part Name	Description	Local
15	LC11129-014A-H	FRONT CABI		
16	GG30021-002A-H	LED LENS		
17	GG30019-003A-H	POWER KNOB		
18	GG20006-003A-H	CONTROL KNOB		
19	GG30020-001A-H	E.E. WINDOW		
20	GG40023-001A-H	JVC MARK		
21	CM35235-003-H	SPRING		

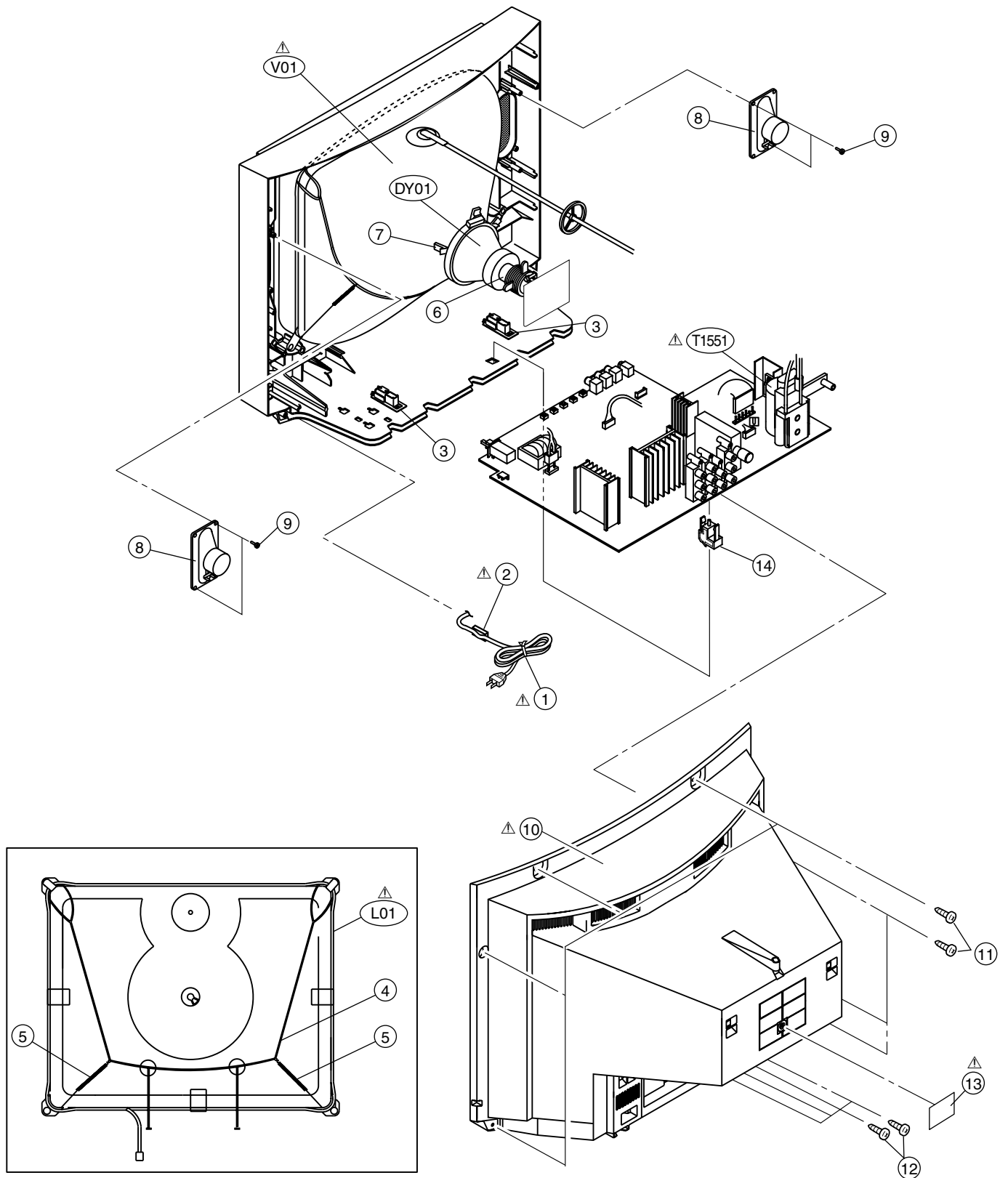
## EXPLODED VIEW-I [AV-21DX3, AV-21DX3/A]



## EXPLODED VIEW PARTS LIST-II [AV-21DX3, AV-21DX3/A]

△ Ref.No.	Part No.	Part Name	Description	Local
△ V01	A51LMV10X	PICTURE TUBE		
△ L01	QQW0157-001	DEG COIL		
△ DY01	CE20336-00A	DEFLECTION YOKE		
△ T1551	QQH0142-001	FBT		
△ 1	QMPR340-165-K2	POWER CORD	[AV-21DX3]	
△ 1	QMPR380-165-K2	POWER CORD	[AV-21DX3/A]	
△ 2	CM47005-A01-H	CORD CLAMP		
3	CM36623-B01-H	CHASSIS RAIL	(X2)	
4	CHGB0028-0A	BRAIDED ASS'Y		
5	A48457-3-H	SPRING	(X2)	
6	A75034-B	PC MAGNET		
7	CE42728-00A	WEDGE ASS'Y	(X3)	
8	QAS0101-001	SPEAKER	(X2) SP01, SP02	
9	QYSBSB4012Z	TAPPING SCREW	(X4)	
△ 10	GG10130-011A-H	REAR COVER		
11	QYSBSFG4016Z	TAPPING SCREW	(X7)	
12	QYSBSF3010Z	TAPPING SCREW	(X4)	
△ 13	GG20024-001B-H	RATING LABEL		
14	CM48144-002-H	PB STOPPER		

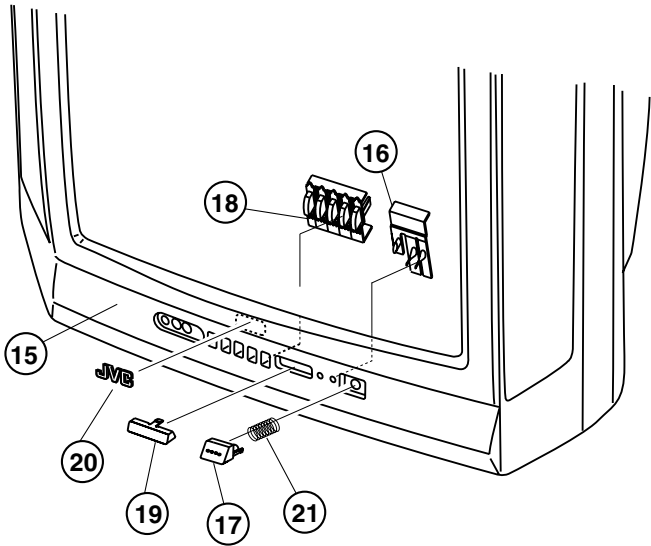
# EXPLODED VIEW-II [AV-21DX3, AV-21DX3/A]



EXPLODED VIEW PARTS LIST-Ⅲ [AV-21FX3]

▲ Ref.No.	Part No.	Part Name	Description	Local
15	LC10394-040A-H	FRONT CABI		
16	LC30618-001B-H	LED LENS		
17	LC30616-004A-H	POWER KNOB		
18	LC20292-004A-H	CONTROL KNOB		
19	LC30617-001C-H	E.E. WINDOW		
20	CM48006-007-C	JVC MARK		
21	CM35235-006-H	SPRING		

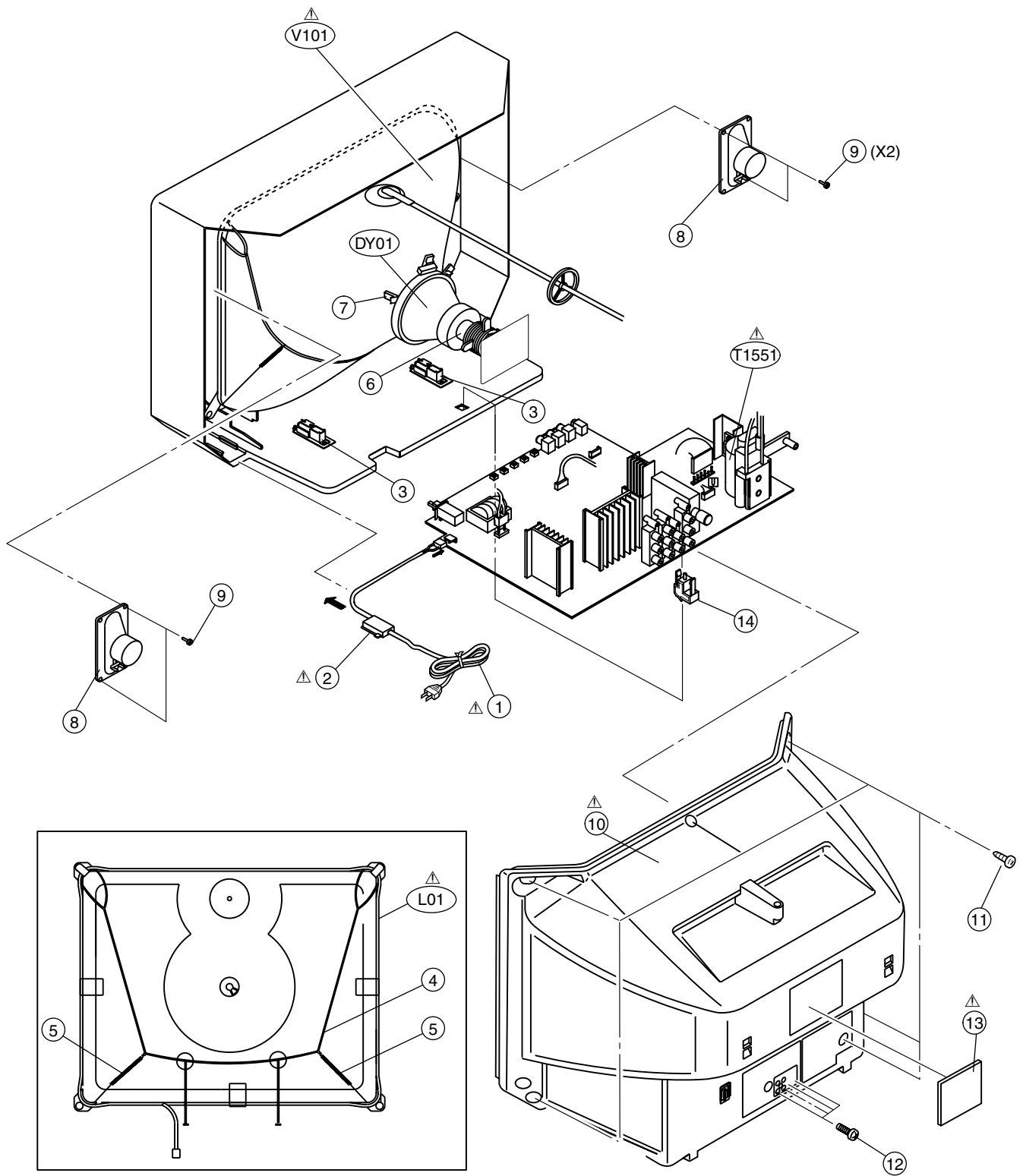
EXPLODED VIEW-Ⅲ [AV-21FX3]



# EXPLODED VIEW PARTS LIST-IV [AV-21FX3]

△ Ref.No.	Part No.	Part Name	Description	Local
△ V01	A51LMV10X	PICTURE TUBE		
△ L01	QQW0157-001	DEG COIL		
△ DY01	CE20336-00A	DEFLECTION YOKE		
△ T1551	QQH0142-001	FBT		
△ 1	QMPR340-165-K2	POWER CORD		
△ 2	CM47005-A01-H	CORD CLAMP		
△ 3	CM36623-B01-H	CHASSIS RAIL	(X2)	
4	CHGB0028-0A	BRAIDED ASS'Y		
5	A48457-3-H	SPRING	(X2)	
6	A75034-B	PC MAGNET		
7	CE40764-00A	WEDGE ASS'Y	(X3)	
8	QAS0085-001	SPEAKER	(X2) SP01, SP02	
9	QYSBSF4012Z	TAPPING SCREW	(X4)	
△ 10	LC10448-005A-H	REAR COVER		
11	QYSBSFG4016Z	TAPPING SCREW	(X6)	
12	QYSBSF3010Z	TAPPING SCREW	(X4)	
△ 13	GG20024-001B-H	RATING LABEL		
14	CM48144-002-H	PB STOPPER		

# EXPLODED VIEW-IV [AV-21FX3]





# PRINTED WIRING BOARD PARTS LIST

## MAIN PW BOARD ASS'Y(SCH-1089A-H2)

△	Symbol No.	Part No.	Part Name	Description	Local	△	Symbol No.	Part No.	Part Name	Description	Local
RESISTOR						RESISTOR					
	R1001	QQR1214-001Y	FERRITE BEADS				R1377	NRSA63J-330X	MG R	33Ω 1/16W	J
	R1002	NRSA63J-221X	MG R	220Ω 1/16W	J		R1378	NRSA63J-223X	MG R	22kΩ 1/16W	J
	R1003	NRSA63J-392X	MG R	3.9kΩ 1/16W	J		R1379	NRSA63J-103X	MG R	10kΩ 1/16W	J
	R1004	NRSA63J-221X	MG R	220Ω 1/16W	J		R1383	QRE121J-394Y	C R	390kΩ 1/2W	J
	R1006	NRSA63J-273X	MG R	27kΩ 1/16W	J		R1384	NRSA63J-103X	MG R	10kΩ 1/16W	J
	R1007	NRSA63J-750X	MG R	75Ω 1/16W	J		R1385	QRE141J-393Y	C R	39kΩ 1/4W	J
	R1101	NRSA63J-100X	MG R	10Ω 1/16W	J		R1401	NRSA63J-224X	MG R	220kΩ 1/16W	J
	R1102	NRSA63J-682X	MG R	6.8kΩ 1/16W	J		R1403	NRSA63J-0R0X	MG R	0.0Ω 1/16W	J
	R1103	NRSA63J-272X	MG R	2.7kΩ 1/16W	J		R1405	NRSA63J-682X	MG R	6.8kΩ 1/16W	J
	R1104	NRSA63J-181X	MG R	180Ω 1/16W	J		R1406	NRSA63J-123X	MG R	12kΩ 1/16W	J
	R1105	NRSA63J-220X	MG R	22Ω 1/16W	J		R1408	NRSA63J-682X	MG R	6.8kΩ 1/16W	J
	R1106	NRSA63J-101X	MG R	100Ω 1/16W	J		R1410	NRSA63J-123X	MG R	12kΩ 1/16W	J
	R1107	NRSA63J-472X	MG R	4.7kΩ 1/16W	J		R1411	QRG01GJ-221	OM R	220Ω 1W	J
	R1108	NRSA63J-222X	MG R	2.2kΩ 1/16W	J		R1412	QRE121J-1R0Y	C R	1Ω 1/2W	J
	R1109	NRSA63J-222X	MG R	2.2kΩ 1/16W	J		R1413	QRX01GJ-2R7	MF R	2.7Ω 1W	J
	R1111	NRSA63J-102X	MG R	1kΩ 1/16W	J		R1425	NRSA63J-683X	MG R	68kΩ 1/16W	J
	R1112	NRSA63J-103X	MG R	10kΩ 1/16W	J		R1521	NRSA63J-101X	MG R	100Ω 1/16W	J
	R1117	NRSA63J-102X	MG R	1kΩ 1/16W	J		R1522	NRSA63J-102X	MG R	1kΩ 1/16W	J
	R1119	NRSA63J-102X	MG R	1kΩ 1/16W	J		R1524	QRL039J-220	OM R	22Ω 3W	J
	R1120	NRSA63J-471X	MG R	470Ω 1/16W	J		R1526	QRG01GJ-181	OM R	180Ω 1W	J
	R1130	NRSA63J-472X	MG R	4.7kΩ 1/16W	J		R1527	QRL039J-103	OM R	10kΩ 3W	J
	R1131	NRSA63J-471X	MG R	470Ω 1/16W	J		R1528	QRX029J-R47	MF R	0.47Ω 2W	J
	R1132	NRSA63J-222X	MG R	2.2kΩ 1/16W	J		R1529	QRX029J-R47	MF R	0.47Ω 2W	J
	R1133	NRSA63J-152X	MG R	1.5kΩ 1/16W	J		R1531	NRSA63J-222X	MG R	2.2kΩ 1/16W	J
	R1134	NRSA63J-182X	MG R	1.8kΩ 1/16W	J	△	R1532	QRZ9017-4R7	F R	4.7Ω 1/4W	J
	R1135	NRSA63J-561X	MG R	560Ω 1/16W	J	△	R1540	QRZ9021-4R7	F R	4.7Ω 1W	J
	R1136	NRSA63J-472X	MG R	4.7kΩ 1/16W	J		R1541	QRE121J-124Y	C R	120kΩ 1/2W	J
	R1137	NRSA63J-103X	MG R	10kΩ 1/16W	J		R1542	QRE121J-274Y	C R	270kΩ 1/2W	J
	R1138	NRSA63J-471X	MG R	470Ω 1/16W	J		R1545	QRE121J-220Y	C R	22Ω 1/2W	J
	R1139	NRSA63J-222X	MG R	2.2kΩ 1/16W	J		R1546	QRE121J-822Y	C R	8.2kΩ 1/2W	J
	R1140	NRSA63J-152X	MG R	1.5kΩ 1/16W	J		R1591	QRE121J-222Y	C R	2.2kΩ 1/2W	J
	R1141	NRSA63J-182X	MG R	1.8kΩ 1/16W	J		R1594	QRE121J-223Y	C R	22kΩ 1/2W	J
	R1142	NRSA63J-561X	MG R	560Ω 1/16W	J		R1595	NRSA63J-222X	MG R	2.2kΩ 1/16W	J
	R1143	NRSA63J-471X	MG R	470Ω 1/16W	J		R1596	QRT029J-1R8	MF R	1.8Ω 2W	J
	R1144	NRSA63J-220X	MG R	22Ω 1/16W	J		R1597	QRT029J-1R5	MF R	1.5Ω 2W	J
	R1145	NRSA63J-821X	MG R	820Ω 1/16W	J		R1621	NRSA63J-0R0X	MG R	0.0Ω 1/16W	J
	R1146	NRSA63J-103X	MG R	10kΩ 1/16W	J		R1622	NRSA63J-0R0X	MG R	0.0Ω 1/16W	J
	R1147	NRSA63J-101X	MG R	100Ω 1/16W	J		R1624	NRSA63J-101X	MG R	100Ω 1/16W	J
	R1148	NRSA63J-332X	MG R	3.3kΩ 1/16W	J		R1625	NRSA63J-101X	MG R	100Ω 1/16W	J
	R1149	NRSA63J-471X	MG R	470Ω 1/16W	J		R1626	NRSA63J-102X	MG R	1kΩ 1/16W	J
	R1155	NRSA63J-471X	MG R	470Ω 1/16W	J		R1627	NRSA63J-102X	MG R	1kΩ 1/16W	J
	R1301	NRSA63J-222X	MG R	2.2kΩ 1/16W	J		R1650	NRSA63J-103X	MG R	10kΩ 1/16W	J
	R1302	NRSA63J-222X	MG R	2.2kΩ 1/16W	J		R1651	NRSA63J-153X	MG R	15kΩ 1/16W	J
	R1303	NRSA63J-562X	MG R	5.6kΩ 1/16W	J		R1654	NRSA63J-103X	MG R	10kΩ 1/16W	J
	R1304	NRSA63J-222X	MG R	2.2kΩ 1/16W	J		R1655	NRSA63J-153X	MG R	15kΩ 1/16W	J
	R1305	NRSA63J-222X	MG R	2.2kΩ 1/16W	J		R1658	QRE121J-2R2Y	C R	2.2Ω 1/2W	J
	R1306	NRSA63J-562X	MG R	5.6kΩ 1/16W	J		R1659	QRE121J-2R2Y	C R	2.2Ω 1/2W	J
	R1351	NRSA63J-151X	MG R	150Ω 1/16W	J		R1660	NRSA63J-103X	MG R	10kΩ 1/16W	J
	R1352	QRL029J-123	OM R	12kΩ 2W	J		R1661	NRSA63J-683X	MG R	68kΩ 1/16W	J
	R1353	NRSA63J-182X	MG R	1.8kΩ 1/16W	J		R1662	NRSA63J-333X	MG R	33kΩ 1/16W	J
	R1354	NRSA63J-331X	MG R	330Ω 1/16W	J		R1663	NRSA63J-103X	MG R	10kΩ 1/16W	J
	R1355	NRSA63J-101X	MG R	100Ω 1/16W	J		R1664	NRSA63J-222X	MG R	2.2kΩ 1/16W	J
	R1356	QRE121J-102Y	C R	1kΩ 1/2W	J		R1686	NRSA63J-102X	MG R	1kΩ 1/16W	J
	R1357	QRZ0107-152Z	C R	1.5kΩ 1W	K		R1687	NRSA63J-103X	MG R	10kΩ 1/16W	J
	R1358	QRE121J-272Y	C R	2.7kΩ 1/2W	J		R1688	NRSA63J-273X	MG R	27kΩ 1/16W	J
	R1359	QRE121J-561Y	C R	560Ω 1/2W	J		R1690	NRSA63J-104X	MG R	100kΩ 1/16W	J
	R1361	NRSA63J-151X	MG R	150Ω 1/16W	J		R1698	NRSA63J-104X	MG R	100kΩ 1/16W	J
	R1362	QRL029J-123	OM R	12kΩ 2W	J		R1699	NRSA63J-104X	MG R	100kΩ 1/16W	J
	R1363	NRSA63J-182X	MG R	1.8kΩ 1/16W	J		R1701	NRSA63J-101X	MG R	100Ω 1/16W	J
	R1364	NRSA63J-331X	MG R	330Ω 1/16W	J		R1702	NRSA63J-101X	MG R	100Ω 1/16W	J
	R1365	NRSA63J-101X	MG R	100Ω 1/16W	J		R1703	NRSA63J-101X	MG R	100Ω 1/16W	J
	R1366	QRE121J-102Y	C R	1kΩ 1/2W	J		R1704	NRSA63J-102X	MG R	1kΩ 1/16W	J
	R1367	QRZ0107-152Z	C R	1.5kΩ 1W	K		R1705	NRSA63J-102X	MG R	1kΩ 1/16W	J
	R1368	NRSA63J-332X	MG R	3.3kΩ 1/16W	J		R1706	NRSA63J-102X	MG R	1kΩ 1/16W	J
△	R1369	QRZ9017-150	F R	15Ω 1/4W	J		R1707	NRSA63J-472X	MG R	4.7kΩ 1/16W	J
	R1370	NRSA63J-151X	MG R	150Ω 1/16W	J		R1708	NRSA63J-472X	MG R	4.7kΩ 1/16W	J
	R1371	QRL029J-123	OM R	12kΩ 2W	J		R1709	NRSA63J-472X	MG R	4.7kΩ 1/16W	J
	R1372	NRSA63J-182X	MG R	1.8kΩ 1/16W	J		R1710	NRSA63J-472X	MG R	4.7kΩ 1/16W	J
	R1373	NRSA63J-331X	MG R	330Ω 1/16W	J		R1711	NRSA63J-101X	MG R	100Ω 1/16W	J
	R1374	NRSA63J-101X	MG R	100Ω 1/16W	J		R1712	NRSA63J-101X	MG R	100Ω 1/16W	J
	R1375	QRE121J-102Y	C R	1kΩ 1/2W	J		R1713	NRSA63J-101X	MG R	100Ω 1/16W	J
	R1376	QRZ0107-152Z	C R	1.5kΩ 1W	K		R1714	NRSA63J-101X	MG R	100Ω 1/16W	J

△ Symbol No.	Part No.	Part Name	Description	Local
<b>RESISTOR</b>				
R1715	NRSA63J-103X	MG R	10kΩ 1/16W J	
R1716	NRSA63J-103X	MG R	10kΩ 1/16W J	
R1717	NRSA63J-103X	MG R	10kΩ 1/16W J	
R1718	NRSA63J-221X	MG R	220Ω 1/16W J	
R1719	NRSA63J-221X	MG R	220Ω 1/16W J	
R1720	NRSA63J-102X	MG R	1kΩ 1/16W J	
R1721	NRSA63J-221X	MG R	220Ω 1/16W J	
R1722	NRSA63J-221X	MG R	220Ω 1/16W J	
R1723	NRSA63J-221X	MG R	220Ω 1/16W J	
R1724	NRSA63J-221X	MG R	220Ω 1/16W J	
R1725	NRSA63J-103X	MG R	10kΩ 1/16W J	
R1726	NRSA63J-472X	MG R	4.7kΩ 1/16W J	
R1727	NRSA63J-104X	MG R	100kΩ 1/16W J	
R1728	NRSA63J-103X	MG R	10kΩ 1/16W J	
R1729	NRSA63J-470X	MG R	47Ω 1/16W J	
R1730	NRSA63J-223X	MG R	22kΩ 1/16W J	
R1731	NRSA63J-101X	MG R	100Ω 1/16W J	
R1732	NRSA02F-393X	MG R	39kΩ 1/10W F	
R1733	NRSA63J-273X	MG R	27kΩ 1/16W J	
R1734	NRSA63J-391X	MG R	390Ω 1/16W J	
R1735	NRSA63J-104X	MG R	100kΩ 1/16W J	
R1736	NRSA63J-333X	MG R	33kΩ 1/16W J	
R1737	NRSA63J-272X	MG R	2.7kΩ 1/16W J	
R1738	NRSA63J-0R0X	MG R	0.0Ω 1/16W J	
R1739	NRSA63J-101X	MG R	100Ω 1/16W J	
R1740	NRSA63J-101X	MG R	100Ω 1/16W J	
R1741	NRSA63J-101X	MG R	100Ω 1/16W J	
R1742	NRSA63J-0R0X	MG R	0.0Ω 1/16W J	
R1743	NRSA63J-681X	MG R	680Ω 1/16W J	
R1744	NRSA63J-561X	MG R	560Ω 1/16W J	
R1745	NRSA63J-105X	MG R	1MΩ 1/16W J	
R1746	NRSA63J-333X	MG R	33kΩ 1/16W J	
R1747	NRSA63J-103X	MG R	10kΩ 1/16W J	
R1748	NRSA02J-475X	MG R	4.7MΩ 1/10W J	
R1749	NRSA02J-475X	MG R	4.7MΩ 1/10W J	
R1750	NRSA63J-0R0X	MG R	0.0Ω 1/16W J	
R1755	NRSA63J-101X	MG R	100Ω 1/16W J	
R1756	NRSA63J-101X	MG R	100Ω 1/16W J	
R1757	NRSA63J-222X	MG R	2.2kΩ 1/16W J	
R1758	NRSA63J-222X	MG R	2.2kΩ 1/16W J	
R1760	NRSA63J-682X	MG R	6.8kΩ 1/16W J	
R1770	QRE121J-271Y	C R	270Ω 1/2W J	
R1771	NRSA63J-102X	MG R	1kΩ 1/16W J	
R1772	QRE121J-271Y	C R	270Ω 1/2W J	
R1773	NRSA63J-102X	MG R	1kΩ 1/16W J	
R1775	NRSA63J-332X	MG R	3.3kΩ 1/16W J	
R1776	NRSA63J-392X	MG R	3.9kΩ 1/16W J	
R1777	NRSA63J-682X	MG R	6.8kΩ 1/16W J	
R1779	NRSA63J-272X	MG R	2.7kΩ 1/16W J	
R1780	NRSA63J-471X	MG R	470Ω 1/16W J	
R1781	NRSA63J-122X	MG R	1.2kΩ 1/16W J	
R1782	NRSA63J-181X	MG R	180Ω 1/16W J	
R1783	NRSA63J-221X	MG R	220Ω 1/16W J	
R1784	NRSA63J-331X	MG R	330Ω 1/16W J	
R1785	NRSA63J-471X	MG R	470Ω 1/16W J	
R1786	NRSA63J-202X	MG R	2kΩ 1/16W J	
R1803	NRSA63J-333X	MG R	33kΩ 1/16W J	
R1804	NRSA63J-750X	MG R	75Ω 1/16W J	
R1805	NRSA63J-750X	MG R	75Ω 1/16W J	
R1806	NRSA63J-750X	MG R	75Ω 1/16W J	
R1807	NRSA63J-750X	MG R	75Ω 1/16W J	
R1808	NRSA63J-823X	MG R	82kΩ 1/16W J	
R1809	NRSA63J-391X	MG R	390Ω 1/16W J	
R1810	NRSA63J-823X	MG R	82kΩ 1/16W J	
R1811	NRSA63J-391X	MG R	390Ω 1/16W J	
R1812	NRSA63J-104X	MG R	100kΩ 1/16W J	
R1813	NRSA63J-222X	MG R	2.2kΩ 1/16W J	
R1815	NRSA63J-101X	MG R	100Ω 1/16W J	
R1818	NRSA63J-222X	MG R	2.2kΩ 1/16W J	
R1820	NRSA63J-101X	MG R	100Ω 1/16W J	
R1821	NRSA63J-222X	MG R	2.2kΩ 1/16W J	
R1823	NRSA63J-101X	MG R	100Ω 1/16W J	

△ Symbol No.	Part No.	Part Name	Description	Local
<b>RESISTOR</b>				
R1824	NRSA63J-222X	MG R	2.2kΩ 1/16W J	
R1826	NRSA63J-101X	MG R	100Ω 1/16W J	
R1829	NRSA63J-750X	MG R	75Ω 1/16W J	
R1830	NRSA63J-222X	MG R	2.2kΩ 1/16W J	
R1831	NRSA63J-222X	MG R	2.2kΩ 1/16W J	
R1832	NRSA63J-122X	MG R	1.2kΩ 1/16W J	
R1833	NRSA63J-102X	MG R	1kΩ 1/16W J	
R1834	NRSA63J-562X	MG R	5.6kΩ 1/16W J	
R1835	NRSA63J-562X	MG R	5.6kΩ 1/16W J	
R1836	NRSA63J-750X	MG R	75Ω 1/16W J	
R1837	NRSA63J-101X	MG R	100Ω 1/16W J	
R1838	QRK126J-121X	UNF R	120Ω 1/2W J	
R1839	QRE121J-221Y	C R	220Ω 1/2W J	
R1840	QRE121J-221Y	C R	220Ω 1/2W J	
R1841	NRSA63J-0R0X	MG R	0.0Ω 1/16W J	
R1842	NRSA63J-0R0X	MG R	0.0Ω 1/16W J	
R1843	NRSA63J-821X	MG R	820Ω 1/16W J	
R1844	NRSA63J-222X	MG R	2.2kΩ 1/16W J	
R1845	NRSA63J-102X	MG R	1kΩ 1/16W J	
R1846	NRSA63J-222X	MG R	2.2kΩ 1/16W J	
R1847	NRSA63J-103X	MG R	10kΩ 1/16W J	
R1848	NRSA63J-471X	MG R	470Ω 1/16W J	
R1849	NRSA63J-221X	MG R	220Ω 1/16W J	
R1880	NRSA63J-202X	MG R	2kΩ 1/16W J	
R1881	NRSA63J-103X	MG R	10kΩ 1/16W J	
R1882	NRSA63J-471X	MG R	470Ω 1/16W J	
R1883	NRSA63J-181X	MG R	180Ω 1/16W J	
R1902	QRF154K-2R2	UNF R	2.2Ω 15W K	
R1904	QRE121J-681Y	C R	680Ω 1/2W J	
R1905	QRM034J-R22	MP R	0.22Ω 3W J	
R1907	NRSA63J-563X	MG R	56kΩ 1/16W J	
R1908	QRL039J-333	OM R	33kΩ 3W J	
R1909	QRE121J-474Y	C R	470kΩ 1/2W J	
R1910	QRE121J-152Y	C R	1.5kΩ 1/2W J	
R1911	QRE121J-562Y	C R	5.6kΩ 1/2W J	
R1912	NRSA63J-122X	MG R	1.2kΩ 1/16W J	
R1913	QRE121J-120Y	C R	12Ω 1/2W J	
△ R1915	QRZ0111-474	C R	470kΩ 1W K	
R1952	NRSA63J-332X	MG R	3.3kΩ 1/16W J	
R1953	NRSA63J-101X	MG R	100Ω 1/16W J	
R1957	QRE121J-6R8Y	C R	6.8Ω 1/2W J	
R1960	NRSA63J-391X	MG R	390Ω 1/16W J	
R1961	QRL029J-183	OM R	18kΩ 2W J	
R1962	NRSA63J-561X	MG R	560Ω 1/16W J	
R1963	QRE121J-103Y	C R	10kΩ 1/2W J	
R1964	NRSA63J-473X	MG R	47kΩ 1/16W J	
R1965	NRSA63J-0R0X	MG R	0.0Ω 1/16W J	
R1966	NRSA63J-682X	MG R	6.8kΩ 1/16W J	
R1967	NRSA63J-473X	MG R	47kΩ 1/16W J	
R1970	NRSA63J-153X	MG R	15kΩ 1/16W J	
R1971	NRSA63J-183X	MG R	18kΩ 1/16W J	
R1972	NRSA63J-391X	MG R	390Ω 1/16W J	
△ R1991	QRZ9046-825Z	C R	8.2MΩ 1W J	
<b>CAPACITOR</b>				
C1001	NCB31HK-103X	C CAP.	0.01μF 50V K	
C1002	QETN1HM-106Z	E CAP.	10μF 50V M	
C1003	QFV71HJ-104Z	MF CAP.	0.1μF 50V J	
C1004	QETN1CM-477Z	E CAP.	470μF 16V M	
C1005	NCB31HK-222X	C CAP.	2200pF 50V K	
C1006	QETN1CM-336Z	E CAP.	33μF 16V M	
C1007	NCB31HK-103X	C CAP.	0.01μF 50V K	
C1101	NCB31HK-472X	C CAP.	4700pF 50V K	
C1102	NCB31HK-472X	C CAP.	4700pF 50V K	
C1103	NCB31HK-472X	C CAP.	4700pF 50V K	
C1104	NCB31HK-472X	C CAP.	4700pF 50V K	
C1105	NCB31HK-472X	C CAP.	4700pF 50V K	
C1106	NDC21HJ-180X	C CAP.	18pF 50V J	
C1107	NCB31HK-103X	C CAP.	0.01μF 50V K	
C1109	QETN1HM-106Z	E CAP.	10μF 50V M	
C1130	NCB31HK-103X	C CAP.	0.01μF 50V K	


△ Symbol No.	Part No.	Part Name	Description	Local	△ Symbol No.	Part No.	Part Name	Description	Local
<b>CAPACITOR</b>					<b>CAPACITOR</b>				
C1131	NCB31HK-103X	C CAP.	0.01μF 50V	K	C1644	QETN1HM-475Z	E CAP.	4.7μF 50V	M
C1132	NCB31HK-103X	C CAP.	0.01μF 50V	K	C1645	QETN1HM-475Z	E CAP.	4.7μF 50V	M
C1133	QETN1CM-107Z	E CAP.	100μF 16V	M	C1650	QEHR1HM-106Z	E CAP.	10μF 50V	M
C1134	NCB31HK-103X	C CAP.	0.01μF 50V	K	C1651	QEHR1VM-476Z	E CAP.	47μF 35V	M
C1135	QETN1AM-477Z	E CAP.	470μF 10V	M	C1652	QETN1HM-106Z	E CAP.	100μF 50V	M
C1136	NCB31HK-103X	C CAP.	0.01μF 50V	K	C1655	QEHQ1VM-108	E CAP.	1000μF 35V	M
C1137	NCB31HK-103X	C CAP.	0.01μF 50V	K	C1656	QEHQ1VM-108	E CAP.	1000μF 35V	M
C1138	NCB31HK-103X	C CAP.	0.01μF 50V	K	C1659	NCF21HZ-224X	C CAP.	0.22μF 50V	Z
C1139	NCB31HK-103X	C CAP.	0.01μF 50V	K	C1660	NCF21HZ-224X	C CAP.	0.22μF 50V	Z
C1140	NCB31HK-103X	C CAP.	0.01μF 50V	K	C1661	NCF21HZ-224X	C CAP.	0.22μF 50V	Z
C1141	NCB31HK-103X	C CAP.	0.01μF 50V	K	C1662	QEHR1VM-227Z	E CAP.	220μF 35V	M
C1142	NCB31HK-103X	C CAP.	0.01μF 50V	K	C1663	NCF21HZ-224X	C CAP.	0.22μF 50V	Z
C1143	QETN1HM-106Z	E CAP.	10μF 50V	M	C1681	QETN1CM-227Z	E CAP.	220μF 16V	M
C1144	NCB31HK-223X	C CAP.	0.022μF 50V	K	C1682	QETN1CM-227Z	E CAP.	220μF 16V	M
C1308	NCB31HK-103X	C CAP.	0.01μF 50V	K	C1683	QETN1CM-336Z	E CAP.	33μF 16V	M
C1310	NRSA63J-0R0X	MG R	0.0Ω 1/16W	J	C1684	QETN1HM-106Z	E CAP.	10μF 50V	M
C1350	NDC21HJ-471X	C CAP.	470pF 50V	J	C1685	NRSA63J-0R0X	MG R	0.0Ω 1/16W	J
C1351	NDC31HJ-681X	C CAP.	680pF 50V	J	C1686	NRSA63J-0R0X	MG R	0.0Ω 1/16W	J
C1352	QETN2EM-475Z	E CAP.	4.7μF 250V	M	C1701	QETN1CM-227Z	E CAP.	220μF 16V	M
C1353	QETN1HM-107Z	E CAP.	100μF 50V	M	C1702	QETN1HM-106Z	E CAP.	10μF 50V	M
C1354	QETN1HM-105Z	E CAP.	1μF 50V	M	C1703	NDC31HJ-330X	C CAP.	33pF 50V	J
C1360	NDC21HJ-471X	C CAP.	470pF 50V	J	C1704	NDC31HJ-330X	C CAP.	33pF 50V	J
C1361	NDC31HJ-681X	C CAP.	680pF 50V	J	C1705	NCB31HK-102X	C CAP.	1000pF 50V	K
C1370	NDC21HJ-471X	C CAP.	470pF 50V	J	C1706	NCB21EK-224X	C CAP.	0.22μF 25V	K
C1371	NDC31HJ-821X	C CAP.	820pF 50V	J	C1707	QETN1CM-107Z	E CAP.	100μF 16V	M
C1372	NRSA63J-273X	MG R	27kΩ 1/16W	J	C1709	QETN1CM-107Z	E CAP.	100μF 16V	M
C1374	QCZ0364-222	C CAP.	2200pF 50V	K	C1710	NCB21EK-224X	C CAP.	0.22μF 25V	K
C1375	QETN1CM-477Z	E CAP.	470μF 16V	M	C1711	NCB31CK-104X	C CAP.	0.1μF 16V	K
C1401	QETN1HM-105Z	E CAP.	1μF 50V	M	C1713	NCB31CK-104X	C CAP.	0.1μF 16V	K
C1402	QCB31HK-682Z	C CAP.	6800pF 50V	K	C1714	QETN1CM-476Z	E CAP.	47μF 16V	M
C1403	QEHR1VM-227Z	E CAP.	220μF 35V	M	C1720	QETN1CM-476Z	E CAP.	47μF 16V	M
C1406	QFLC2AJ-683Z	M CAP.	0.068μF 100V	J	C1725	NCB31HK-681X	C CAP.	680pF 50V	K
C1407	QCS32HJ-180Z	C CAP.	18pF 500V	J	C1730	NCB21EK-224X	C CAP.	0.22μF 25V	K
C1408	QFV71HJ-184Z	MF CAP.	0.18μF 50V	J	C1731	NCB21EK-224X	C CAP.	0.22μF 25V	K
C1411	NCF21HZ-334X	C CAP.	0.33μF 50V	Z	C1732	QETN1CM-107Z	E CAP.	100μF 16V	M
C1412	NCF21HZ-334X	C CAP.	0.33μF 50V	Z	C1733	NCB31CK-104X	C CAP.	0.1μF 16V	K
C1413	QFLC2AJ-563Z	M CAP.	0.056μF 100V	J	C1734	NCB31HK-222X	C CAP.	2200pF 50V	K
C1422	QEHQ1VM-108	E CAP.	1000μF 35V	M	C1735	NCB31HK-222X	C CAP.	2200pF 50V	K
C1521	QETN1VM-476Z	E CAP.	47μF 35V	M	C1736	QETN1HM-105Z	E CAP.	1μF 50V	M
C1522	QFLC1HJ-332Z	M CAP.	3300pF 50V	J	C1737	QETN1HM-105Z	E CAP.	1μF 50V	M
C1523	QFLC1HJ-223Z	M CAP.	0.022μF 50V	J	C1738	NCB31CK-104X	C CAP.	0.1μF 16V	K
C1524	QFZ0200-103	MPP CAP.	0.01μF 1.5kVH±3%		C1739	NFV41CJ-104X	MPP CAP.	0.1μF 16V	J
C1527	QFZ0199-474	MPP CAP.	0.47μF AC250V	J	C1740	QETN1HM-225Z	E CAP.	2.2μF 50V	M
C1529	QEHR2EM-475Z	E CAP.	4.7μF 250V	M	C1741	NCB31CK-104X	C CAP.	0.1μF 16V	K
C1531	QEHR1EM-108Z	E CAP.	1000μF 25V	M	C1742	NCB31CK-104X	C CAP.	0.1μF 16V	K
C1533	QEHR1EM-108Z	E CAP.	1000μF 25V	M	C1743	QETN1CM-107Z	E CAP.	100μF 16V	M
C1535	QCB32HK-101Z	C CAP.	100pF 500V	K	C1744	NCB31HK-102X	C CAP.	1000pF 50V	K
C1536	QFLC1HJ-103Z	M CAP.	0.01μF 50V	J	C1745	NCB31EK-473X	C CAP.	0.047μF 25V	K
C1540	QFV71HJ-104Z	MF CAP.	0.1μF 50V	J	C1746	NCB31EK-473X	C CAP.	0.047μF 25V	K
C1541	QETN2EM-226Z	E CAP.	22μF 250V	M	C1747	NCB31EK-473X	C CAP.	0.047μF 25V	K
C1542	QETN2EM-226Z	E CAP.	22μF 250V	M	C1748	QETN1CM-476Z	E CAP.	47μF 16V	M
C1550	NCB31CK-104X	C CAP.	0.1μF 16V	K	C1749	QETN1HM-106Z	E CAP.	10μF 50V	M
C1591	QETN1AM-107Z	E CAP.	100μF 10V	M	C1751	NCB31CK-104X	C CAP.	0.1μF 16V	K
C1592	QEZ0203-107	E CAP.	100μF 160V	M	C1752	NCB31CK-104X	C CAP.	0.1μF 16V	K
C1593	QETN1EM-476Z	E CAP.	47μF 25V	M	C1753	NCB31CK-104X	C CAP.	0.1μF 16V	K
C1625	QETN1HM-475Z	E CAP.	4.7μF 50V	M	C1760	NCB31HK-104X	C CAP.	0.1μF 50V	K
C1626	QETN1HM-475Z	E CAP.	4.7μF 50V	M	C1761	QETN1CM-107Z	E CAP.	100μF 16V	M
C1628	NCB31HK-472X	C CAP.	4700pF 50V	K	C1770	QETN1HM-106Z	E CAP.	10μF 50V	M
C1629	NCB31EK-104X	C CAP.	0.1μF 25V	K	C1801	QETN1HM-106Z	E CAP.	10μF 50V	M
C1630	QETN1HM-475Z	E CAP.	4.7μF 50V	M	C1802	QETN1HM-106Z	E CAP.	10μF 50V	M
C1631	NCB31EK-104X	C CAP.	0.1μF 25V	K	C1803	QETN1HM-106Z	E CAP.	10μF 50V	M
C1632	QETN1HM-475Z	E CAP.	4.7μF 50V	M	C1804	QETN1HM-106Z	E CAP.	10μF 50V	M
C1633	QETN1HM-475Z	E CAP.	4.7μF 50V	M	C1805	NCB31HK-104X	C CAP.	0.1μF 50V	K
C1634	QETN1HM-475Z	E CAP.	4.7μF 50V	M	C1807	NCF31AZ-105X	C CAP.	1μF 10V	Z
C1635	QETN1HM-107Z	E CAP.	100μF 50V	M	C1808	NCF31AZ-105X	C CAP.	1μF 10V	Z
C1636	QETN1HM-475Z	E CAP.	4.7μF 50V	M	C1810	NCF31AZ-105X	C CAP.	1μF 10V	Z
C1637	QETN1HM-475Z	E CAP.	4.7μF 50V	M	C1811	NCB31HK-104X	C CAP.	0.1μF 50V	K
C1638	NCB31EK-104X	C CAP.	0.1μF 25V	K	C1812	NCF31AZ-105X	C CAP.	1μF 10V	Z
C1639	NCF21CZ-105X	C CAP.	1μF 16V	Z	C1813	NCB31HK-103X	C CAP.	0.01μF 50V	K
C1640	QETN1HM-475Z	E CAP.	4.7μF 50V	M	C1814	NCB31HK-104X	C CAP.	0.1μF 50V	K
C1641	NCB31EK-104X	C CAP.	0.1μF 25V	K	C1815	NCF31AZ-105X	C CAP.	1μF 10V	Z
C1642	NCB31HK-472X	C CAP.	4700pF 50V	K	C1817	NCF31AZ-105X	C CAP.	1μF 10V	Z

△ Symbol No.	Part No.	Part Name	Description	Local
<b>CAPACITOR</b>				
C1819	NCB31HK-104X	C CAP.	0.1μF 50V K	
C1820	NCF31AZ-105X	C CAP.	1μF 10V Z	
C1821	NCF31AZ-105X	C CAP.	1μF 10V Z	
C1822	QETN1CM-477Z	E CAP.	470μF 16V M	
C1823	QETN1CM-107Z	E CAP.	100μF 16V M	
C1824	QETN1CM-107Z	E CAP.	100μF 16V M	
C1825	NCB31HK-103X	C CAP.	0.01μF 50V K	
C1826	NCB31HK-104X	C CAP.	0.1μF 50V K	
C1827	NCB31HK-103X	C CAP.	0.01μF 50V K	
C1829	NCB31HK-103X	C CAP.	0.01μF 50V K	
C1830	NCB31HK-103X	C CAP.	0.01μF 50V K	
C1831	NCB31HK-103X	C CAP.	0.01μF 50V K	
C1833	QETN1HM-226Z	E CAP.	22μF 50V M	
C1834	NDC31HJ-181X	C CAP.	180pF 50V J	
△ C1901	QFZ9075-224	MPP CAP.	0.22μF	
△ C1902	QFZ9075-104	MPP CAP.	0.1μF	
C1903	QCZ9015-102Z	C CAP.	1000pF AC250V Z	
C1904	QCZ9015-102Z	C CAP.	1000pF AC250V Z	
C1905	QCZ9015-102Z	C CAP.	1000pF AC250V Z	
△ C1906	QFZ9072-224	MM CAP.	0.22μF	
C1907	QEZO552-227	E CAP.	220μF	
C1908	QFZO209-222	MPP CAP.	2200pF	
C1910	NDC31HJ-471X	C CAP.	470pF 50V J	
C1911	QEHR1EM-227Z	E CAP.	220μF 25V M	
C1914	QETN1EM-227Z	E CAP.	220μF 25V M	
C1915	QFLC1HJ-222Z	M CAP.	2200pF 50V J	
C1952	QCB32HK-471Z	C CAP.	470pF 500V K	
C1953	QEHQ1VM-108	E CAP.	1000μF 35V M	
C1954	NCB31HK-102X	C CAP.	1000pF 50V K	
C1957	QCB32HK-471Z	C CAP.	470pF 500V K	
C1958	QEHQ1EM-228	E CAP.	2200μF 25V M	
C1959	QCZO122-561	C CAP.	560pF 2000V K	
C1960	QEZO203-107	E CAP.	100μF 160V M	
C1961	QETN1HM-225Z	E CAP.	2.2μF 50V M	
C1962	QETN1HM-106Z	E CAP.	10μF 50V M	
C1964	QETN1CM-476Z	E CAP.	47μF 16V M	
C1965	QETN1HM-225Z	E CAP.	2.2μF 50V M	
C1968	NCB31CK-104X	C CAP.	0.1μF 16V K	
C1972	QEHR1VM-476Z	E CAP.	47μF 35V M	
C1973	QEHR1CM-107Z	E CAP.	100μF 16V M	
C1974	NCB31CK-104X	C CAP.	0.1μF 16V K	
C1975	QEHR1CM-227Z	E CAP.	220μF 16V M	
C1976	QEHR1CM-107Z	E CAP.	100μF 16V M	
C1977	QEHR1AM-477Z	E CAP.	470μF 10V M	
C1978	NCB31HK-104X	C CAP.	0.1μF 50V K	
C1980	QETN1CM-107Z	E CAP.	100μF 16V M	
△ C1991	QCZ9079-102	C CAP.	1000pF AC250V M	
△ C1992	QCZ9079-102	C CAP.	1000pF AC250V M	
△ C1993	QCZ9079-152	C CAP.	1500pF AC250V M	
<b>TRANSFORMER</b>				
T1521	CE40203-00CJ1	DRIVE TRANSF		
△ T1551	QQH0142-001	FB TRANSF.		
△ T1901	QQS0182-001	SW TRANSF.		
<b>COIL</b>				
L1001	CE42050-001Z	BEADS CORE		
L1002	CE42050-001Z	BEADS CORE		
L1101	QQLZ014-R82	COIL	0.82μH	
L1104	QQL244K-180Z	COIL	18μH	K
L1524	QQLZ034-320	COIL	32μH	
L1701	QQL244K-100Z	COIL	10μH	K
L1702	QQL244K-100Z	COIL	10μH	K
L1731	QQL244J-5R6Z	COIL	5.6μH	J
L1732	QQL244J-5R6Z	COIL	5.6μH	J
L1951	QQLZ034-460	COIL	46μH	
L1953	QQL244J-5R6Z	COIL	5.6μH	J
L1954	QQL244J-5R6Z	COIL	5.6μH	J

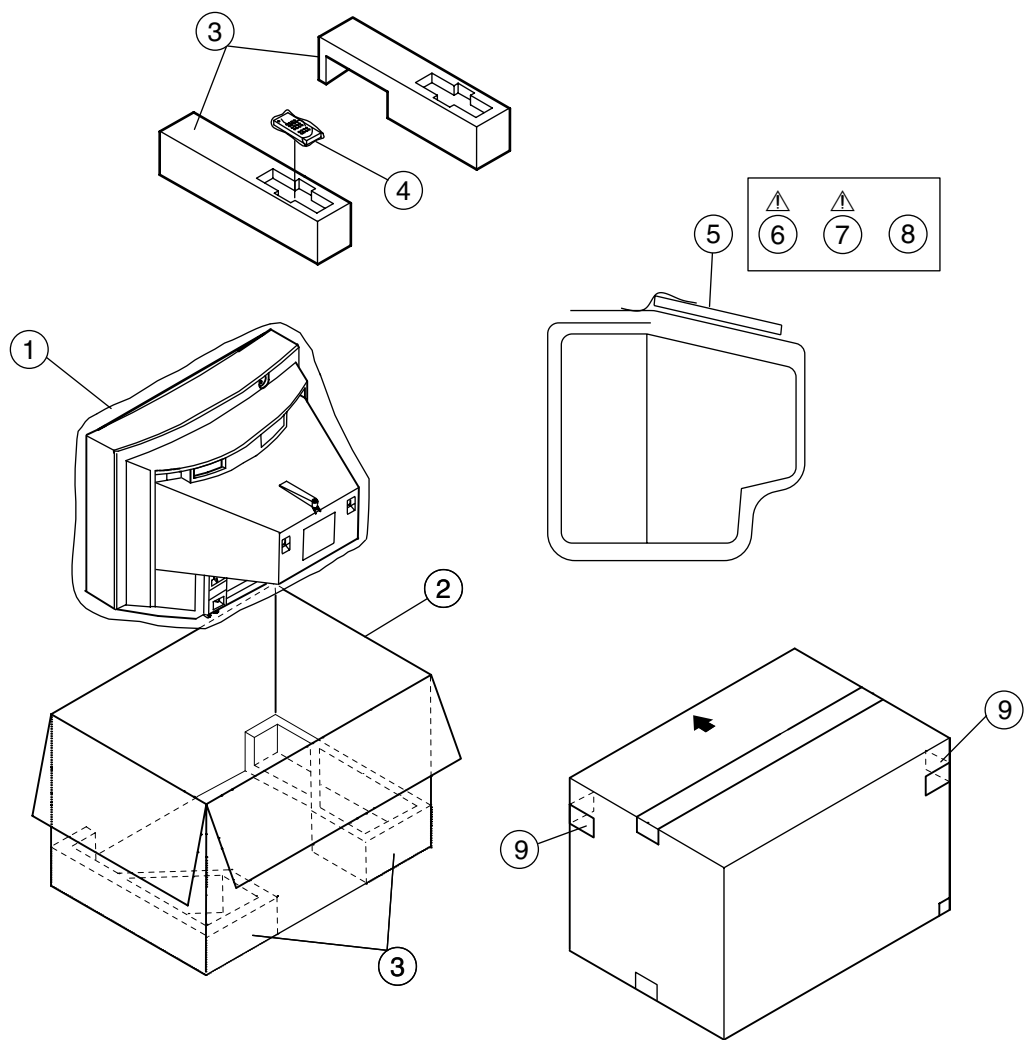
△ Symbol No.	Part No.	Part Name	Description	Local
<b>DIODE</b>				
D1101	1SS268-X	SI. DIODE		
D1350	1SS244-T2	SI. DIODE		
D1352	RGPI0J-5025-T3	SI. DIODE		
D1353	MA111-X	SI. DIODE		
D1354	MA111-X	SI. DIODE		
D1355	MA111-X	SI. DIODE		
D1356	MA111-X	SI. DIODE		
D1357	MA111-X	SI. DIODE		
D1358	MA111-X	SI. DIODE		
D1360	1SS244-T2	SI. DIODE		
D1370	1SS244-T2	SI. DIODE		
D1372	MA3075/M/-X	ZENER DIODE		
D1373	MA111-X	SI. DIODE		
D1374	MA111-X	SI. DIODE		
D1401	RGPI0J-5025-T3	SI. DIODE		
D1402	MTZJ75-T2	ZENER DIODE		
D1405	1N4003-T2	SI. DIODE		
D1408	MA111-X	SI. DIODE		
D1523	RGPI0J-5025-T3	SI. DIODE		
D1541	RGPI0J-5025-T3	SI. DIODE		
D1550	MA111-X	SI. DIODE		
D1551	RGPI0J-5025-T3	SI. DIODE		
D1553	RGPI0J-5025-T3	SI. DIODE		
D1554	RGPI0J-5025-T3	SI. DIODE		
D1592	MA3075/H/-X	ZENER DIODE		
D1652	MA3330/L/-X	ZENER DIODE		
D1653	MA3330/L/-X	ZENER DIODE		
D1655	MA111-X	SI. DIODE		
D1682	MA111-X	SI. DIODE		
D1702	MA3024-X	ZENER DIODE		
D1703	MA3051/M/-X	ZENER DIODE		
D1704	MA3033-X	ZENER DIODE		
D1730	MA111-X	SI. DIODE		
D1731	MA111-X	SI. DIODE		
D1732	MA111-X	SI. DIODE		
D1733	MA111-X	SI. DIODE		
D1760	SLR-342VR-T16	LED		
D1761	SLR-342MC-T16	LED		
D1770	MA111-X	SI. DIODE		
D1771	P1241-04	PHOTO CONDUCTOR		
D1801	MA3120/M/-X	ZENER DIODE		
D1802	MA3120/M/-X	ZENER DIODE		
D1807	MA3100/M/-X	ZENER DIODE		
D1808	MA3100/M/-X	ZENER DIODE		
D1901	GSIB460	BRIDGE DIODE		
D1903	MTZJ12C-T2	ZENER DIODE		
D1904	EG01C-T2	SI. DIODE		
D1906	EG01C-T2	SI. DIODE		
D1907	MA3150/M/-X	ZENER DIODE		
D1908	MTZJ27B-T2	ZENER DIODE		
D1909	MA111-X	SI. DIODE		
D1910	NRSA63J-0R0X	MG R	0.0Ω 1/16W J	
D1911	RGPI0J-TS-T3	SI. DIODE		
D1912	1SS133-T2	SI. DIODE		
D1914	ERC30-02L38	SI. DIODE		
D1952	ERC30-02L38	SI. DIODE		
D1954	RGPI0B-F1	SI. DIODE		
D1956	RU3AM-LFC4	SI. DIODE		
D1964	MA3330/L/-X	ZENER DIODE		
D1965	1SS133-T2	SI. DIODE		
D1966	MA3068/M/-X	ZENER DIODE		
D1968	MA111-X	SI. DIODE		
D1969	MA111-X	SI. DIODE		
D1971	MA111-X	SI. DIODE		
<b>TRANSISTOR</b>				
Q1101	2SC5083/L-P/-T	TRANSISTOR		
Q1102	UN2212-X	DIGI. TRANSISTOR		
Q1104	2SB709A/QR/-X	TRANSISTOR		
Q1105	UN2212-X	DIGI. TRANSISTOR		
Q1106	UN2212-X	DIGI. TRANSISTOR		
Q1108	2SD601A/QR/-X	TRANSISTOR		
Q1109	2SB709A/QR/-X	TRANSISTOR		
Q1110	UN2212-X	DIGI. TRANSISTOR		

△	Symbol No.	Part No.	Part Name	Description	Local	△	Symbol No.	Part No.	Part Name	Description	Local
<b>TRANSISTOR</b>						<b>OTHERS</b>					
	Q1111	2SD601A/QR/-X	TRANSISTOR				CL1002	QZW0027-001	WIRE CLAMP		
	Q1130	2SB709A/QR/-X	TRANSISTOR				CL1003	QZW0027-004	WIRE CLAMP		
	Q1131	UN2212-X	DIGI. TRANSISTOR			△	CP1951	ICP-N75-Y	IC PROTECTOR		
	Q1132	2SD601A/QR/-X	TRANSISTOR			△	CP1953	ICP-N75-Y	IC PROTECTOR		
	Q1133	2SB709A/QR/-X	TRANSISTOR			△	F1901	QMF51E2-4R0J4	FUSE		
	Q1134	UN2212-X	DIGI. TRANSISTOR				FC1901	CEMG002-001Z	FUSE CLIP		
	Q1135	UN2212-X	DIGI. TRANSISTOR				J1770	QNS0155-001	3.5 JACK		
	Q1136	2SD601A/QR/-X	TRANSISTOR				J1771	QNN0282-003	PIN JACK		
	Q1137	2SD601A/QR/-X	TRANSISTOR				J1772	QNN0282-002	PIN JACK		
	Q1138	UN2212-X	DIGI. TRANSISTOR				J1773	QNN0282-001	PIN JACK		
	Q1301	2SB709A/QR/-X	TRANSISTOR				J1801	QNN0349-001	PIN JACK		
	Q1302	2SB709A/QR/-X	TRANSISTOR				J1802	QNN0349-002	PIN JACK		
	Q1350	STC344-T	TRANSISTOR				J1803	QNN0348-001	PIN JACK		
	Q1351	2SA1321-T	TRANSISTOR				J1804	QNN0349-001	PIN JACK		
	Q1352	2SB709A/QR/-X	TRANSISTOR				K1104	QQR1113-001Z	FERRITE BEADS		
	Q1360	STC344-T	TRANSISTOR				K1105	QQR1113-001Z	FERRITE BEADS		
	Q1361	2SA1321-T	TRANSISTOR				K1106	QQR1113-001Z	FERRITE BEADS		
	Q1370	STC344-T	TRANSISTOR				K1701	QQR1113-001Z	FERRITE BEADS		
	Q1371	2SA1321-T	TRANSISTOR				K1902	QQR1114-001Z	FERRITE BEADS		
	Q1374	2SD601A/QR/-X	TRANSISTOR				K1903	QQR1114-001Z	FERRITE BEADS		
	Q1375	2SD601A/QR/-X	TRANSISTOR				K1951	QQR1113-001Z	FERRITE BEADS		
	Q1376	2SD601A/QR/-X	TRANSISTOR				K1954	QQR1113-001Z	FERRITE BEADS		
	Q1521	2SC2655/Y/-T	TRANSISTOR				K1955	QQR1214-001Y	FERRITE BEADS		
	Q1522	2SD2634-YD	POWER TRANSISTOR			△	LF1902	QQR1035-001	LINE FILTER		
	Q1591	2SA1208/ST/Z1-T	TRANSISTOR			△	PC1901	PC123F2	IC(PHOTO COUPLE)		
	Q1592	UN2212-X	DIGI. TRANSISTOR			△	RY1901	QSK0092-001	RELAY		
	Q1660	2SD601A/QR/-X	TRANSISTOR				S1780	QSW0619-003Z	TACT SWITCH	MENU	
	Q1661	2SD601A/QR/-X	TRANSISTOR				S1781	QSW0619-003Z	TACT SWITCH	CH-	
	Q1683	2SB709A/QR/-X	TRANSISTOR				S1782	QSW0619-003Z	TACT SWITCH	CH+	
	Q1684	2SB709A/QR/-X	TRANSISTOR				S1783	QSW0619-003Z	TACT SWITCH	VOL-	
	Q1685	DTC323TK-X	DIGI. TRANSISTOR				S1784	QSW0619-003Z	TACT SWITCH	VOL+	
	Q1686	DTC323TK-X	DIGI. TRANSISTOR			△	S1901	QSW0846-001	PUSH SWITCH	POWER	
	Q1701	2SB709A/QR/-X	TRANSISTOR				SF1101	QAX0325-001	SAW FILTER		
	Q1702	2SB709A/QR/-X	TRANSISTOR				SF1102	QAX0731-001	SAW FILTER		
	Q1703	FMC2A-X	D.TRANSISTOR			△	SK1351	QNZ0537-001	CRT SOCKET		
	Q1720	2SB709A/QR/-X	TRANSISTOR				TH1901	QAD0134-4R5	P THERMISTOR		
	Q1770	2SB709A/QR/-X	TRANSISTOR				TU1001	QAU0185-005	TUNER		
	Q1801	DTC323TK-X	DIGI. TRANSISTOR			△	VA1901	QAF0052-621	VARISTOR		
	Q1802	DTC323TK-X	DIGI. TRANSISTOR				W1008	NRSA63J-0R0X	MG R	0.0Ω	1/16W J
	Q1803	2SB709A/QR/-X	TRANSISTOR				W1010	NRSA63J-0R0X	MG R	0.0Ω	1/16W J
	Q1804	2SC1740S/QR/-T	TRANSISTOR				W1052	NRSA63J-0R0X	MG R	0.0Ω	1/16W J
	Q1860	2SD601A/QR/-X	TRANSISTOR				W1071	NRSA63J-0R0X	MG R	0.0Ω	1/16W J
	Q1861	2SB709A/QR/-X	TRANSISTOR				W1096	NRSA63J-0R0X	MG R	0.0Ω	1/16W J
	Q1862	2SB709A/QR/-X	TRANSISTOR				W1239	NRSA63J-0R0X	MG R	0.0Ω	1/16W J
	Q1952	2SD601A/QR/-X	TRANSISTOR				W1257	NRSA63J-0R0X	MG R	0.0Ω	1/16W J
	Q1953	2SD601A/QR/-X	TRANSISTOR				W1307	NRSA63J-0R0X	MG R	0.0Ω	1/16W J
	Q1954	2SD601A/QR/-X	TRANSISTOR				W1309	NRSA63J-0R0X	MG R	0.0Ω	1/16W J
							W1317	NRSA63J-0R0X	MG R	0.0Ω	1/16W J
							W1322	NRSA63J-0R0X	MG R	0.0Ω	1/16W J
							W1325	NRSA63J-0R0X	MG R	0.0Ω	1/16W J
							W1326	NRSA63J-0R0X	MG R	0.0Ω	1/16W J
							W1330	NRSA63J-0R0X	MG R	0.0Ω	1/16W J
							W1333	NRSA63J-0R0X	MG R	0.0Ω	1/16W J
							W1375	NRSA63J-0R0X	MG R	0.0Ω	1/16W J
							W1379	NRSA63J-0R0X	MG R	0.0Ω	1/16W J
							W1388	NRSA63J-0R0X	MG R	0.0Ω	1/16W J
							W1417	NRSA63J-0R0X	MG R	0.0Ω	1/16W J
							W1418	NRSA63J-0R0X	MG R	0.0Ω	1/16W J
							W1430	NRSA63J-0R0X	MG R	0.0Ω	1/16W J
							X1701	QAX0737-001	CRYSTAL		
							Y1001	NRSA63J-0R0X	MG R	0.0Ω	1/16W J
							Y1002	NRSA63J-0R0X	MG R	0.0Ω	1/16W J
							Y1005	NRSA63J-0R0X	MG R	0.0Ω	1/16W J
							Y1130	NRSA63J-0R0X	MG R	0.0Ω	1/16W J
							Y1301	NRSA63J-0R0X	MG R	0.0Ω	1/16W J
							Y1601	NRSA63J-0R0X	MG R	0.0Ω	1/16W J
							Y1604	NRSA63J-0R0X	MG R	0.0Ω	1/16W J
<b>IC</b>											
	IC1130	M52342SP	I.C(MONO-ANA)								
	IC1401	AN5522	I.C(MONO-ANA)								
	IC1602	NJW1138M-X	I.C(MONO-ANA)								
	IC1650	AN5276	I.C(MONO-ANA)								
	IC1701	TDA9386N22S0868	I.C(MCU)								
	IC1702	AT24C08-21WS3	I.C(MEMORY-OTH)	(SERVICE)							
	IC1760	GP1UM281QK	IR DETECT UNIT								
	IC1801	MM1492AF	I.C(MONO-ANA)								
	IC1901	STR-F6707A/F7	I.C(HYBRID)								
	IC1951	SE115N-LF12	I.C(HYBRID)								
	IC1972	R1141Q331B-X	REGULATE								
	IC1974	AN80T36	REG IC								
<b>OTHERS</b>											
		LC30114-001C-H	LED HOLDER								
		CM35921-005-H	CDS HOLDER								
	CF1106	QAX0639-001Z	C TRAP								
	CF1130	QAX0642-001Z	C FILTER								
	CF1140	QAX0695-001Z	C FILTER								
	CF1141	QAX0696-001Z	C FILTER								
	CF1142	QAX0697-001Z	C FILTER								
	CL1001	QZW0027-002	WIRE CLAMP								

REMOTE CONTROL UNIT PARTS LIST  
RM-C1014-1H [AV-21DX3, AV-21DX3/A, AV-21FX3]

	Ref. No.	Part No.	Part Name	Description	Local
		25-1168F	BATTERY COVER		

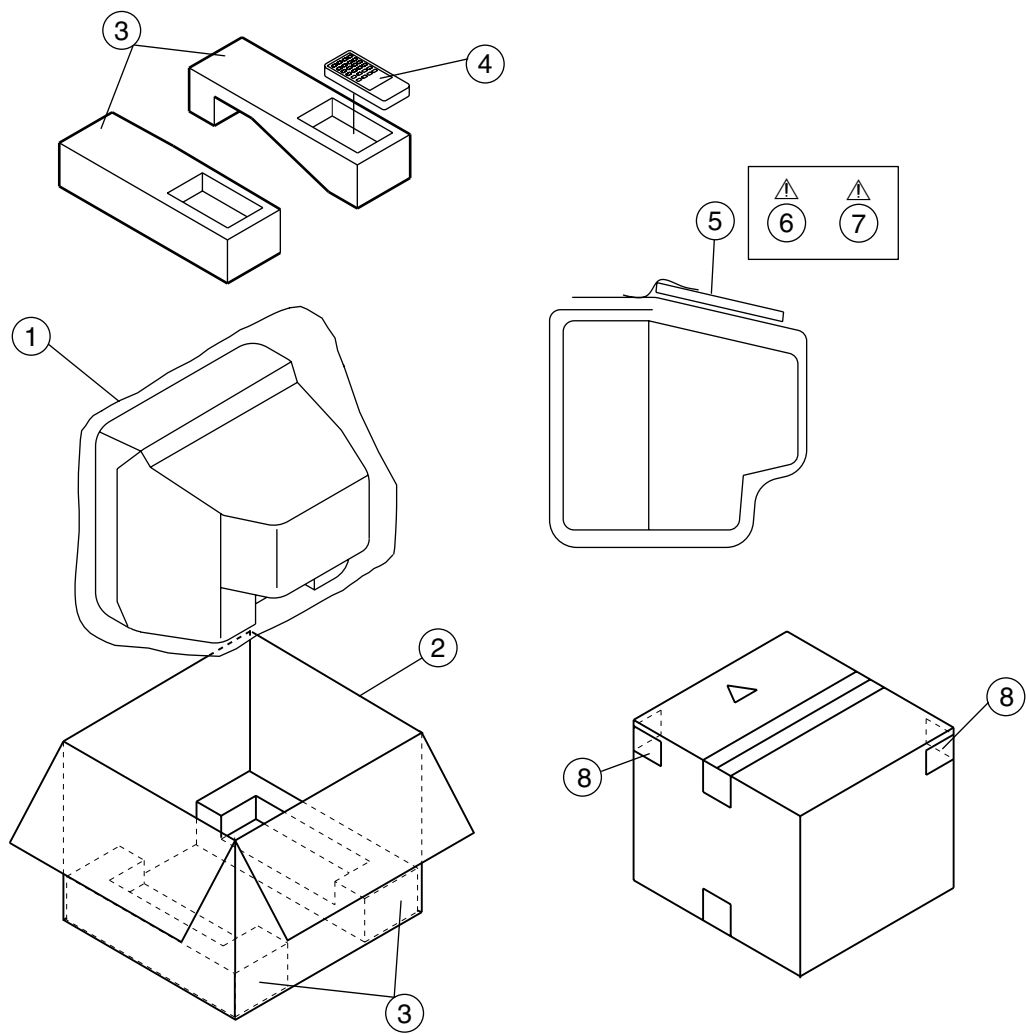
PACKING [AV-21DX3, AV-21DX3/A]



PACKING PARTS LIST [AV-21DX3, AV-21DX3/A]

△	Ref.No.	Part No.	Part Name	Description	Local
	1	CP30967-003-H	POLY BAG		
	2	GG10056-078A-H	P CASE		
	3	GG10131-001B-H	CUSHION ASSY		
	4	RM-C1014-1H	RC HAND UNIT		
	5	CP30966-001-H	POLY BAG		
△	6	LCT1170-001B-H	INST BOOK		
△	7	LCT1171-001A-H	DIGEST MANUAL		
	8	QAM0055-001	CONVERSION PLUG	[AV-21DX3/A]	
	9	GG20025-001A-H	CORNER LABEL	(x2)	

PACKING [AV-21FX3]



PACKING PARTS LIST [AV-21FX3]

▲ Ref.No.	Part No.	Part Name	Description	Local
1	CP30967-003-H	POLY BAG		
2	GG10056-080A-H	P CASE		
3	LC10516-007A-H	CUSHION ASSY		
4	RM-C1014-1H	RC HAND UNIT		
5	CP30966-001-H	POLY BAG		
▲ 6	LCT1170-001B-H	INST BOOK		
▲ 7	LCT1176-001A-H	DIGEST MANUAL		
8	GG20025-001A-H	CORNER LABEL	(x2)	



This image shows a single sheet of white paper with horizontal ruling lines. The lines are evenly spaced and run across the width of the page. There are no margins, text, or other markings on the paper.

### SERVICE NOTE :

[illegible]